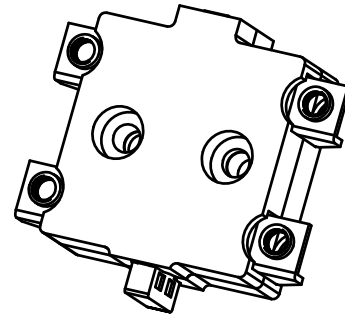
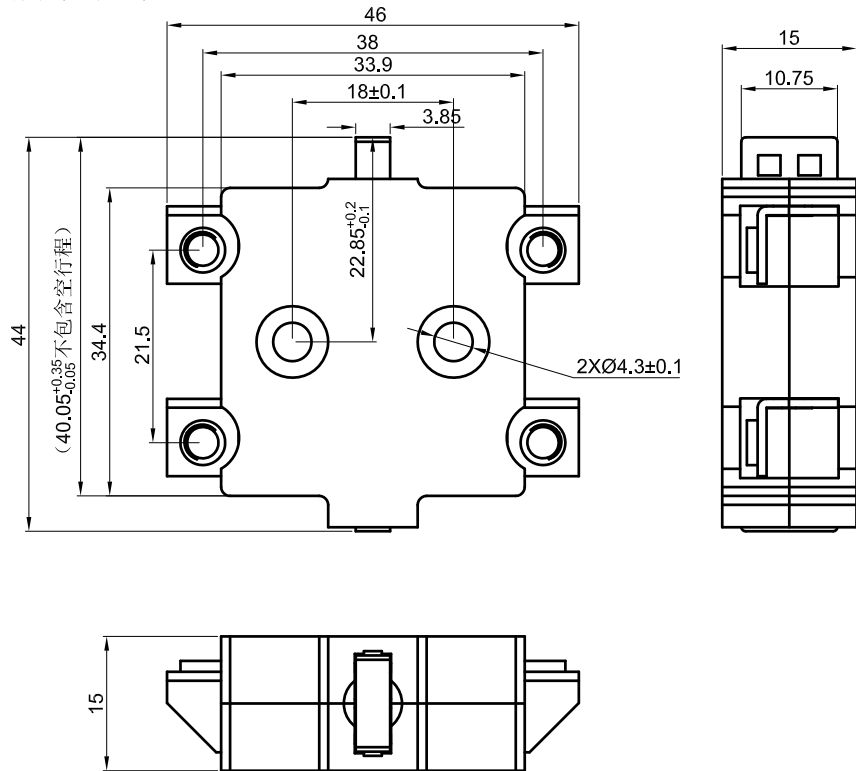




PB (辅助开关)

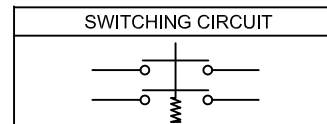


Operational environment :15A 250V AC 120N/H,  
 Contact Resistance: 50mΩ Max;  
 Insulation Resistance:DC 500V 100MΩ Min;  
 Dielectric Strength:AC 1000V 1 minute  
 Total Travel: 3.5±0.2mm  
 Operating Force: under 1mm, F=4.2±0.3N  
 under 3.5mm, F=6.6±0.5N  
 Machanical Life:30,000 cycles Min.  
 Electrical life: 20000 cycles Min.  
 Operating Temperature:0°C~85°C

MATERIAL:

Body:PC,UL rated:94V-0

Terminal:Brass with tin-plate



				公差 TOLANCES	.X± 0.3	.XX± 0.15	角度 ANGLE	± 1°	单位 DIMENSION UNIT	mm.	
				版本 VERSION	A1	比例尺 SCALE	1:1	日期 DATE	2019.10.16	品名 TITLE	图号 DRAWING NO
A1	重新整理发行	2019.10.16	N/A	核准	核对	Z.H.B.	绘图	王立权	PB(辅助开关)	PB_A1	
版本 VER.	变更说明 CHANGE DESCRIPTION	日期 DATE	ECN NO.	APPROVED BY	CHECKED BY		DRAWN BY				